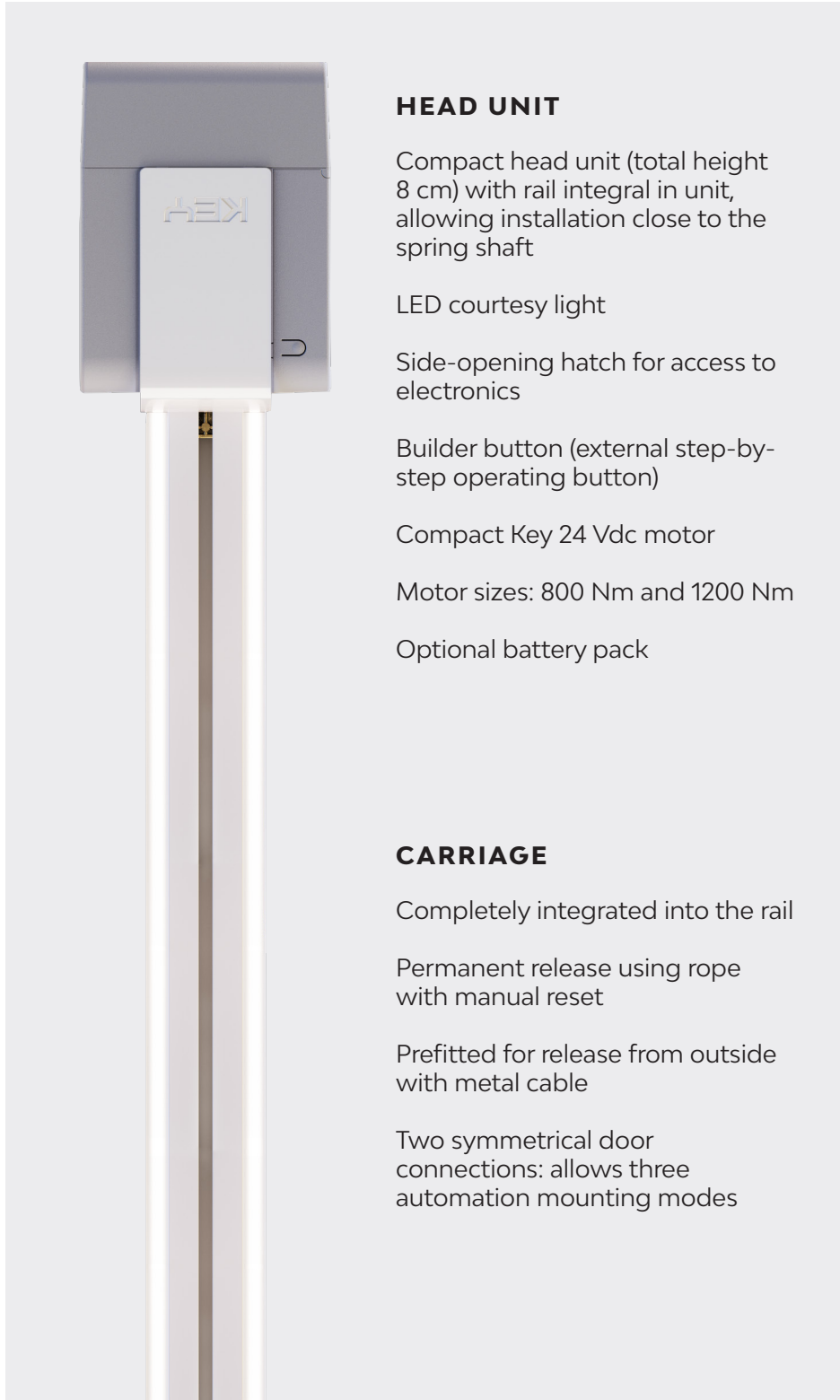


HALO



**ELECTROMECHANICAL GEAR
MOTOR FOR SECTIONAL DOORS**

KEY
AUTOMATION



HEAD UNIT

Compact head unit (total height 8 cm) with rail integral in unit, allowing installation close to the spring shaft

LED courtesy light

Side-opening hatch for access to electronics

Builder button (external step-by-step operating button)

Compact Key 24 Vdc motor

Motor sizes: 800 Nm and 1200 Nm

Optional battery pack

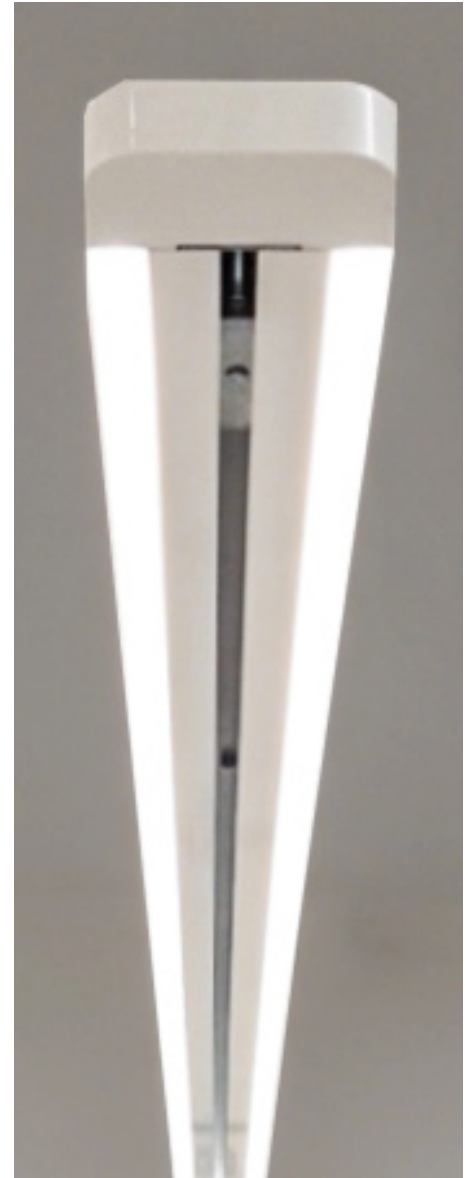
CARRIAGE

Completely integrated into the rail

Permanent release using rope with manual reset

Prefitted for release from outside with metal cable

Two symmetrical door connections: allows three automation mounting modes

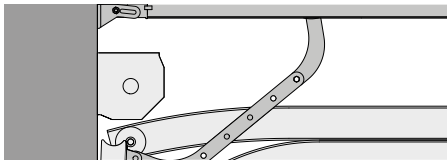


NIGHT LIGHT SYSTEM

Concept that combines the comfort of an automatic gate with the use of LED lighting to illuminate your entrance over night

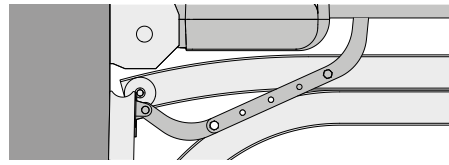
- + **SAFETY** Ease the night vision
- + **COMFORT** Defines the driveway passage during the night
- + **SAVING** Allows lower power consumption





CLASSIC INSTALLATION

With head in the center of the garage



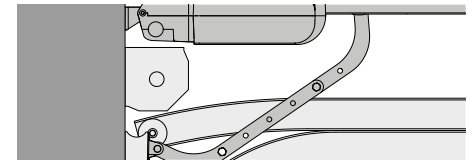
CROSS BEAM INSTALLATION

All wiring remains on the cross beam

Reinforces the spring shaft for added rigidity

Shorter installation times

Less weight projecting into centre of garage







SPRING SHAFT INSTALLATION

All wiring remains on the cross beam

Shorter installation times

Less weight projecting into centre of garage

MODELS

	CODE	DESCRIPTION	PCS PALLET
 	HA8	For sectional doors up to 11 sqm (with 3 m rail) or 12 sqm (with 4 m rail), a 24 Vdc motor and a control unit with integrated receiver	104
 	HA12	For sectional doors up to 16 sqm (with 3 m rail) or 19 sqm (with 4 m rail), a 24 Vdc motor and a control unit with integrated receiver	104

RAILS

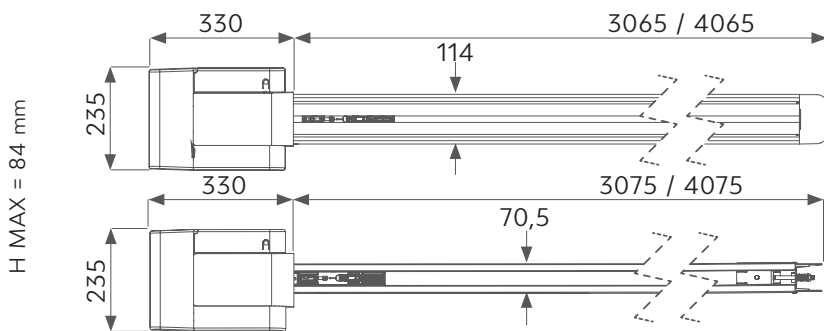
CODE	DESCRIPTION
RAL31	Aluminum belt rail with integrated LED lighting, 3090 mm (1x3m) one-piece rail
RAL41	Aluminum belt rail with integrated LED lighting, 4090 mm (1x4m) one-piece rail
RAB3X1P	Steel belt rail, 3100 mm (3x1.03m) 3-pieces rail
RAB2X2P	Steel belt rail, 4100 mm (2x2.05m) 2-pieces rail
RAB31	Steel belt rail, 3100 mm (1x3.1m) one-piece rail
RAB41	Steel belt rail, 4100 mm (1x4.1m) one-piece rail
RAB61	Steel belt rail, 6200 mm (2x3.1m) 2-pieces rail

TECHNICAL DATA

		HA8	HA12
MECHANICAL DATA			
speed	cm/s	15	15
force	N	800	1200
max cycles/hour ⁽¹⁾		20	20
ELECTRICAL DATA			
power supply	Vac	230 (±10%) 50Hz	
flashing	W	3 max	3 max
courtesy light on rail with integrated LEDs	W	-	40 max
accessories power output	mA	100 (24 Vdc not regulated)	
max no. of transmitters that can be stored		90	90
ROLLING CODE			
GENERIC DATA			
degree of protection	IP	20	20
dimensions (L x D x H):	mm	330 - 235 - 84	
weight	kg	6,5	6,9
working temperature	°C	-10 + 45	-10 + 45
maximum door size	m ²	12	19
maximum door weight	kg	120	200

⁽¹⁾ for 2,4x2m LxH door. Data are subject to smoothness and balance of the door and the type of rail used

DIMENSIONS



COMPATIBILITY HEAD - RAIL

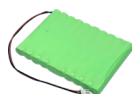
	HA8	HA12
RAB31	X	X
RAB2X2P	X	X
RAB3X1P	X	X
RAB41	X	X
RAB61		X
RAL31		X
RAL41		X

LIMIT USE

Sectional	Up-and-over slide-away
HA8 with 3 m rail	
S max=11m ² - H max = 2,6m	S max=10m ² - H max = 3m
HA8 with 4 m rail	
S max=12m ² - H max = 3,6m	S max=11m ² - H max = 3,4m

Sectional	Up-and-over slide-away
HA12 with 3 m rail	
S max=16m ² - H max = 2,6m	S max=16m ² - H max = 3m
HA12 with 4 m rail	
S max=19m ² - H max = 3,6m	S max=17m ² - H max = 3,4m

ACCESSORIES



KBPN

Kit of 1.3 Ah lead battery and battery charger

PC 1



KBP

Kit of 1.3 Ah lead battery and battery charger

PC 1



HAL2

Swinging arm for counterweight overhead doors

PC 1



HAL7

Motor support bracket, L=1400 mm. For up and over doors

PC 1



HAL1S

Kit for external unlock with key and metal cord for insulated overhead doors

PC 1



SBLST

Kit for external unlock with key and metal cord for uninsulated overhead doors

PC 1



HAL3

Kit supplementary fixing ceiling rail (for steel rail)

PC 1



HAL4

Kit 2 supplementary fixing clamps (for steel rail)

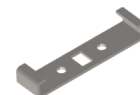
PC 1



HAL5

Kit supplementary fixing ceiling rail (for Led rail)

PC 1



HAL6

Kit for wall support (for Led rail)

PC 1



SBCO

External unlocking system. L=3000 mm

PC 1



550CABL045A00 *

Special cable for Eclipse flash light RG174 50 Ohm + 4 x 0,50 mm² (100m)

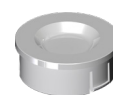
PC 1



520STAF029A00

Fixing clamp

PC 1



TO1U

Touch transmitter, 1 channel, rolling code, to be recessed in the door panel

PC 1



TO1M

Touch transmitter, 1 channels, rolling code

PC 1



TO2M

Touch transmitter, 2 channels, rolling code

PC 1



TO2MP

Touch transmitter, 2 channels, with motion sensor

PC 1



DYL

Programming module Cable length 120 cm (only 14A board)

PC 1



KUBE PRO

Wireless module for programming

PC 1



KUBE

Wireless controlling module for end user

PC 1

* it is not recommended to use a connection longer than 4 m to avoid sensible loss of reach