

ALT



**ROAD BARRIER WITH DOUBLE
BUILT-IN FLASHING LIGHT**

KEY
AUTOMATION



For intensive use, for private and public solutions

Anti-UV polyester powder coating

Double built-in flashing light, two-coloured green/red

Robust gears and levers for reliable functioning over time

Universal housing: boom arm can be installed both right or left

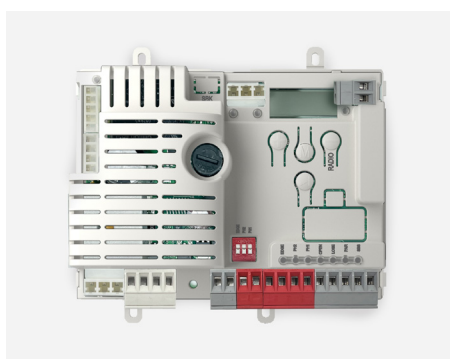
Encoder for obstacle detection and immediate run inversion










NEW CONTROL UNIT CT10324

+ CT10324 New 5-character / 16-segment display for more natural and intuitive reading

+ ASTL5 5m boom arm for ALT4K with reinforced support



MODELS

CODE	DESCRIPTION	PCS PALLET
  ALT3KF 	Barrier body, 24 Vdc, CT10324F control unit, encoder and double built-in led flashing light. For 3 m bar, connection for boom arms included. FASTLINE	5
  ALT4K	Barrier body, 24 Vdc, CT10324 control unit, encoder and double built-in led flashing light. For 4m to 5m bar, connection for boom arms included	8
  ALT6K	Barrier body, 24 Vdc, CT10324 control unit, encoder and double built-in led flashing light. For 6m to 8m bar, connection for boom arms included	5

TECHNICAL DATA

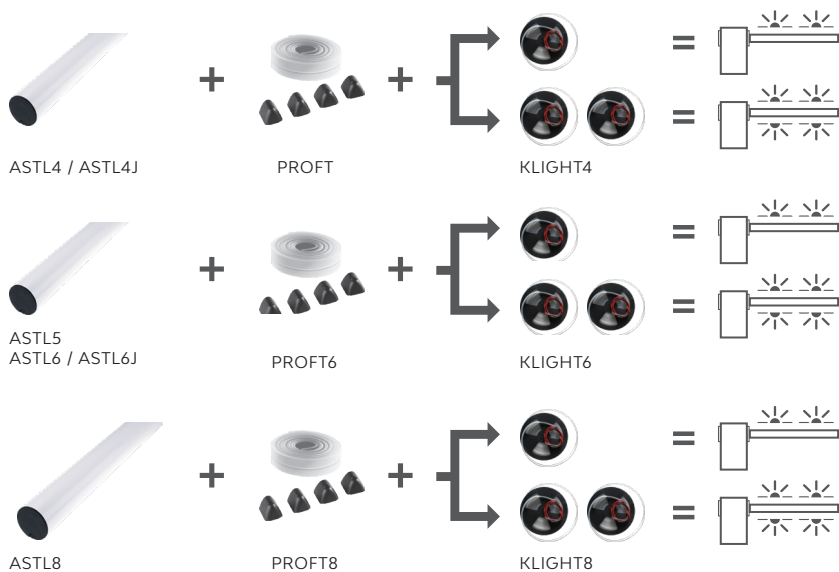
		ALT3KF	ALT4K	ALT6K
MECHANICAL DATA				
torque	Nm	40	200	305
cycles/hour		500	410	240 / 120***
opening time at 90° **	sec	1	3,5	6/12***
ELECTRICAL DATA				
control unit		CT10324F	CT10324	CT10324
automation power supply	Vac	230	230	230
frequency	Hz	50/60	50/60	50/60
motor power supply	Vdc	24	24	24
rated power	W	30	40	40
maximum input power	W	60	90	100
integrated lights		yes	yes	yes
GENERIC DATA				
protection degree	IP	54	54	54
dimensions (L - D - H)	mm	400 - 280 - 1188	320 - 220 - 1110	400 - 280 - 1188
weight	kg	62	47	67
working temperature	°C	-20 + 55	-20 + 55	-20 + 55
maximum boom arm lenght	m	3	4 (5*)	6 (8*)

* partially equipped

** without accessories

***with 8 m bar

HOW TO CHOOSE THE LED LIGHT SYSTEM FOR BARRIERS



DIMENSIONS

BOOM ARM	CODE	CLEAR OPENING (LP)
3 m	ALT3KF + AST3F	2740 mm
4 m	ALT4K + ASTL4	3780 mm
4 m	ALT4K + ASTL4J	3780 mm
5 m	ALT4K + ASTL5	4780 mm
6 m	ALT6K + ASTL6	5640 mm
6 m	ALT6K + ASTL6J	5640 mm
8 m	ALT6K + ASTL8	8040 mm

ALT4K ACCESSORIES



ASTL4
Aluminum boom arm
L=4 m Ø 60 mm
(without accessories)

PC 1



ASTL4J
2+2 m aluminum boom arm Ø
60 mm + joint

PC 1



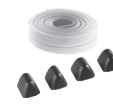
AS-SNO3
Aluminum boom arm with
articulated joint (max. L 3 m)
preassembled (only for ALT4K)

PC 1



CP-BR
Anchorage plate
with rag bolts

PC 1



PROFT
Flexible rubber profile,
8 m and plug set for ASTL4
(transparent)

PC 1



ASTL5*
Aluminum boom arm
L=5 m Ø 60 mm
(without accessories)

PC 1



PROF041B00
Internal reinforcement for
60mm rod attachment

PC 1

ALT6K ACCESSORIES



ASTL6
Aluminum boom arm,
L=6 m Ø 90 mm
(without accessories)

PC 1



ASTL6J
3+3 m aluminum boom arm, Ø
90 mm + joint

PC 1



ASTL8**
4,2+4,2 m
aluminum boom arm, Ø 90
mm + joint + springs

PC 1



AST3F
Aluminum tubular boom arm
L=3 m Ø 60 mm (not fitting
with accessories)

PC 1



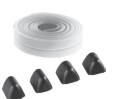
CP-BR6
Anchorage plate
with rag bolts

PC 1



PROFT6
Flexible rubber profile,
12 m and plug set (transparent)

PC 1



PROFT8
Flexible rubber profile,
16 m and plug set (transparent)

PC 1



CP-BR6
Anchorage plate
with rag bolts

PC 1

ALT3KF ACCESSORIES

ACCESSORIES



APFX
Fixed support RAL 7047

PC 1



APM
Mobile support RAL 9010

PC 1



TWIN
Interface for
master/slave function

PC 1



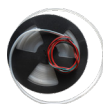
KLIGHT4
Led lights for 4 m bar

PC 1



KLIGHT6
Led lights for 5 and 6 m bar

PC 1



KLIGHT8
Led lights for 8 m bar

PC 1



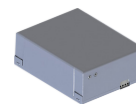
LOOP2
Magnetic sensor, one coil, one
outputs

PC 1



SKIRT2
Kit fence, length
1,7 m

PC 1



KBP
Battery back-up kit

PC 1



KITFIXBATT
Fixing batteries brackets

PC 1

KEY

AD
Red reflecting
adhesive stripes

PC 1

* for ASTL5 the combining of PROFT6, KLIGHT6 and APFX is recommended

** for ASTL8 the combining of APFX is recommended