



Cable ID: UTP-0.57-CCA.

Date / Time: 08/03/2023 02:36:45 PM

Headroom 4.6 dB (NEXT 36-78)

Test Limit: TIA Cat 6 Channel

Cable Type: Cat 6 UTP

NVP: 70.4%

Operator: HYP

Software Version: 2.7400

Limits Version: 1.9300

Calibration Date:

Main (Tester): 08/27/2014

Remote (Tester): 08/27/2014

Test Summary: PASS

Model: DTX-1800

Main S/N: 2800045

Remote S/N: 2800046

Main Adapter: DTX-CHA002

Remote Adapter: DTX-CHA002

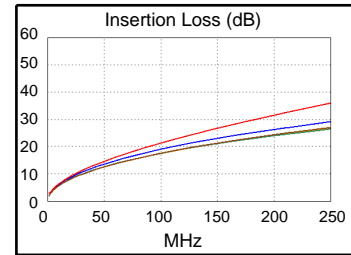
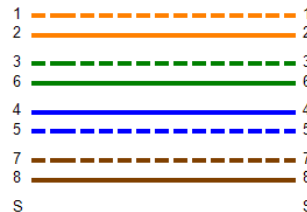
Length (ft), Limit 328	[Pair 78]	227
Prop. Delay (ns), Limit 555	[Pair 45]	346
Delay Skew (ns), Limit 50	[Pair 45]	18
Resistance (ohms)	[Pair 45]	26.1
Insertion Loss Margin (dB)	[Pair 45]	6.8
Frequency (MHz)	[Pair 45]	250.0
Limit (dB)	[Pair 45]	35.9



227 ft

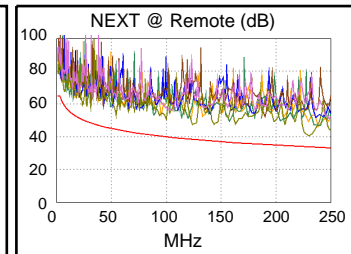
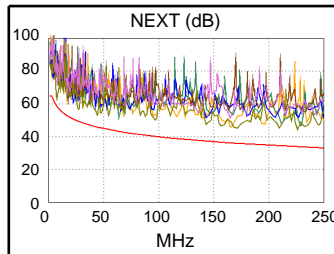


Wire Map (T568B)
PASS

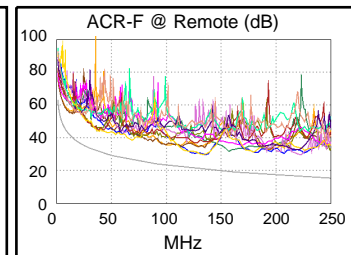
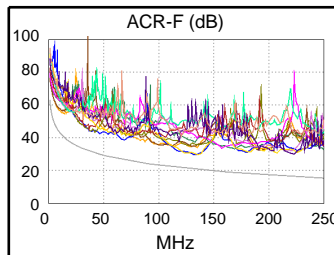


Worst Case Margin Worst Case Value

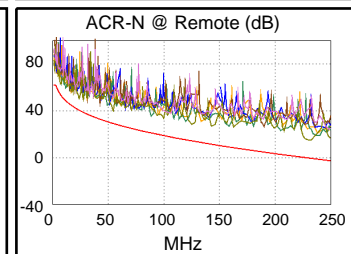
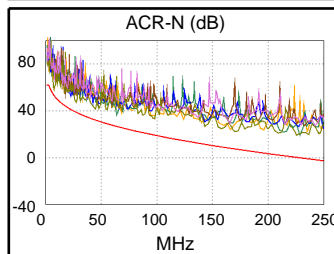
PASS	MAIN	SR	MAIN	SR
Worst Pair	36-78	36-78	36-78	36-78
NEXT (dB)	4.6	6.4	10.6	6.4
Freq. (MHz)	7.4	231.0	226.0	231.0
Limit (dB)	58.7	33.7	33.9	33.7
Worst Pair	36	36	36	36
PS NEXT (dB)	6.6	8.9	10.5	8.9
Freq. (MHz)	7.4	231.0	169.0	231.0
Limit (dB)	56.2	30.8	33.1	30.8



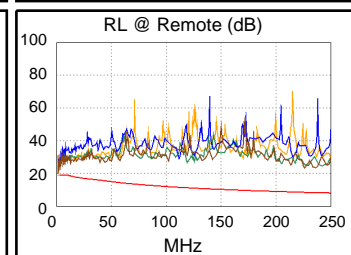
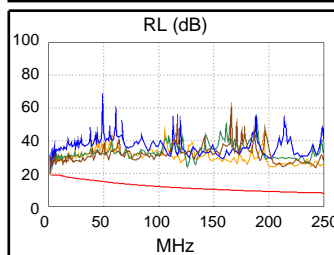
PASS	MAIN	SR	MAIN	SR
Worst Pair	12-78	12-78	12-78	36-78
ACR-F (dB)	8.7	8.8	8.7	12.8
Freq. (MHz)	133.0	135.5	133.0	223.5
Limit (dB)	20.8	20.6	20.8	16.3
Worst Pair	12	12	12	78
PS ACR-F (dB)	10.7	10.1	10.7	14.2
Freq. (MHz)	135.0	133.0	135.0	223.5
Limit (dB)	17.7	17.8	17.7	13.3



N/A	MAIN	SR	MAIN	SR
Worst Pair	36-78	36-78	36-78	36-78
ACR-N (dB)	5.2	9.2	18.7	14.7
Freq. (MHz)	7.4	7.3	226.0	231.0
Limit (dB)	53.3	53.5	0.0	-0.6
Worst Pair	36	36	45	78
PS ACR-N (dB)	7.2	10.4	21.3	17.6
Freq. (MHz)	7.4	31.3	229.5	231.0
Limit (dB)	50.7	34.3	-3.4	-3.5



PASS	MAIN	SR	MAIN	SR
Worst Pair	78	78	78	78
RL (dB)	5.9	5.0	14.6	14.8
Freq. (MHz)	3.6	3.5	214.0	234.5
Limit (dB)	19.0	19.0	8.7	8.3



Compliant Network Standards:

10BASE-T	100BASE-TX	100BASE-T4
1000BASE-T	ATM-25	ATM-51
ATM-155	100VG-AnyLan	TR-4
TR-16 Active	TR-16 Passive	