



Face to Convenient Future

Dahua FACT series face recognition
access control terminal



Fast



Accurate



Convenient



Trusted

Background

Post **Covid-19**, The FACT series is one of the most suitable and ideal access control products.



Reduce Contact

Face recognition is touchless and doesn't require additional actions



Keep Social Distance

It covers a recognition distance of up to 1.5 meters



Avoid Crowding

It offers intelligent recognition of less than 0.3 second per person

FACT Highlights

FACT's 4 distinct features: fast recognition speed, highly accurate recognition rate, convenient to use, and trusted privacy protection. Its product design is compact and cost-effective, and offers intuitive management.

Fast:

Provides a face recognition speed of less than 0.3 second per person.

Convenient:

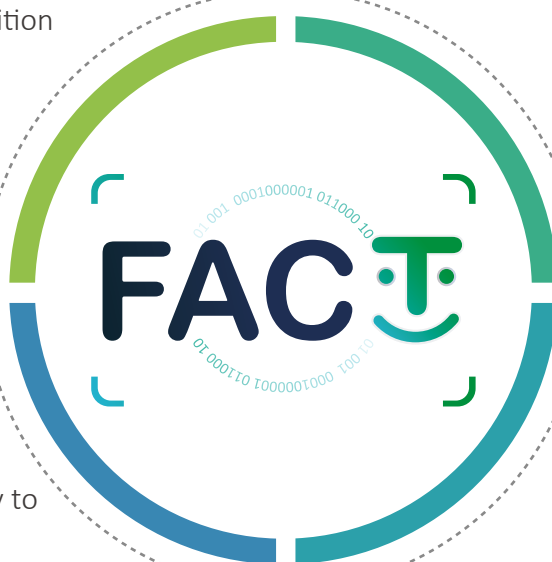
Offers touchless access, diverse installation options and multiple management interface.

Accurate:

Offers 99.5% accuracy and strong adaptability to harsh environments.

Trusted:

Equipped with anti-spoofing algorithm against photo and video attack.

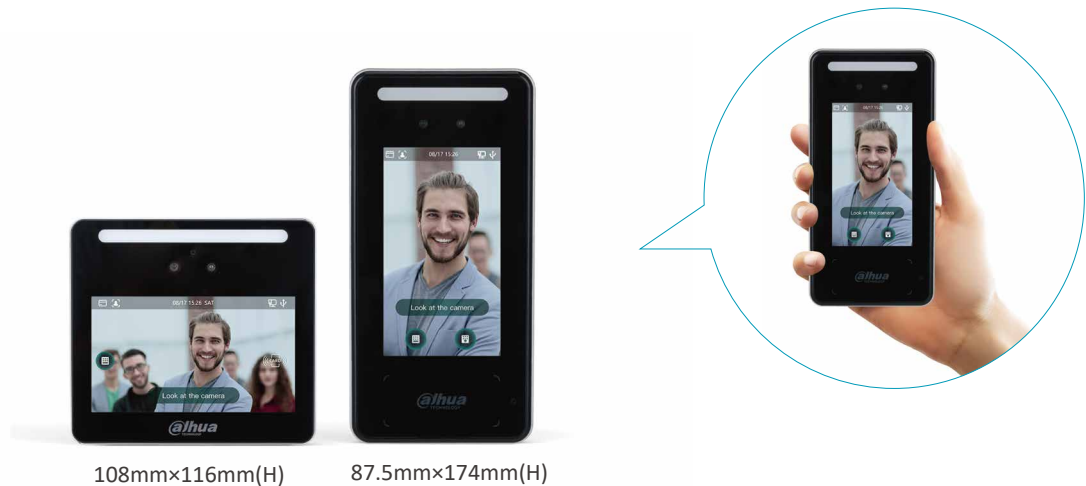




FACT Features

• Compact Design

The size of the FACT device is similar to an iPhone 12 Pro Max. It reduces installation costs and allows installation of face recognition in small spaces.



4 Management Methods Supported By The FACT Series



Web-based Browser Management

- Device configuration



Platform Software — DSS

- User management
- Device configuration



Local GUI Menu

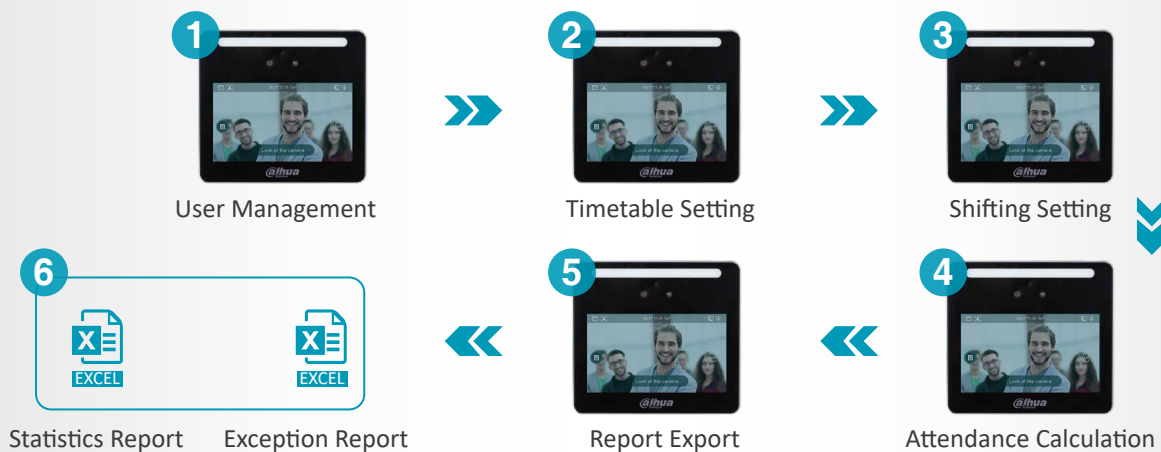
- User management
- Device configuration



Mobile App — DMSS

- Remote unlocking
- Alarm push notification

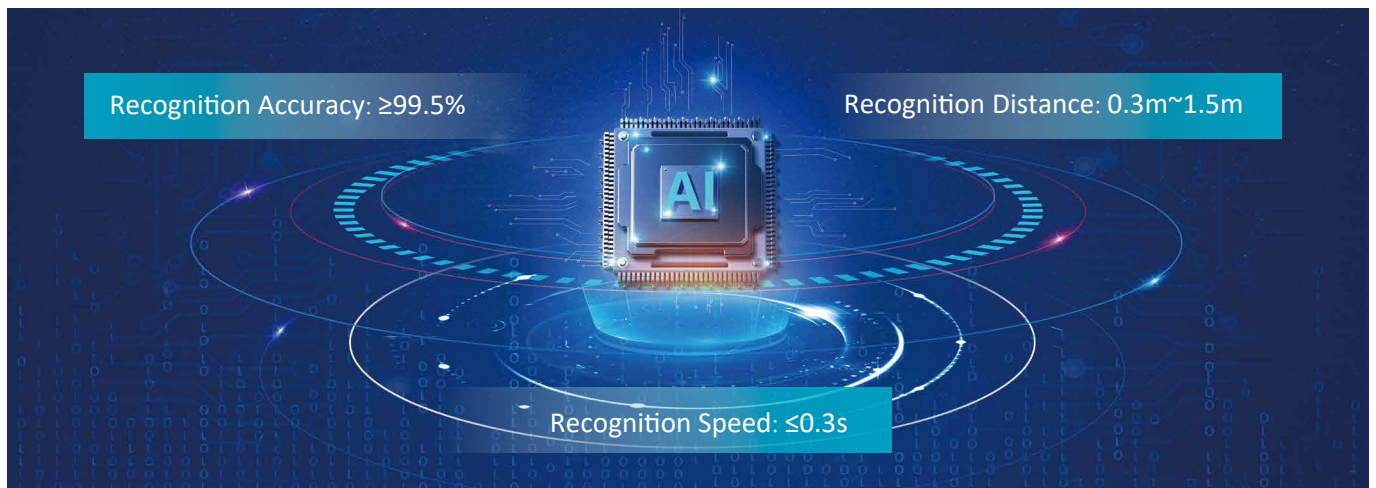
Smart Standalone Time Attendance Function (only for ASA3213GL-MW)





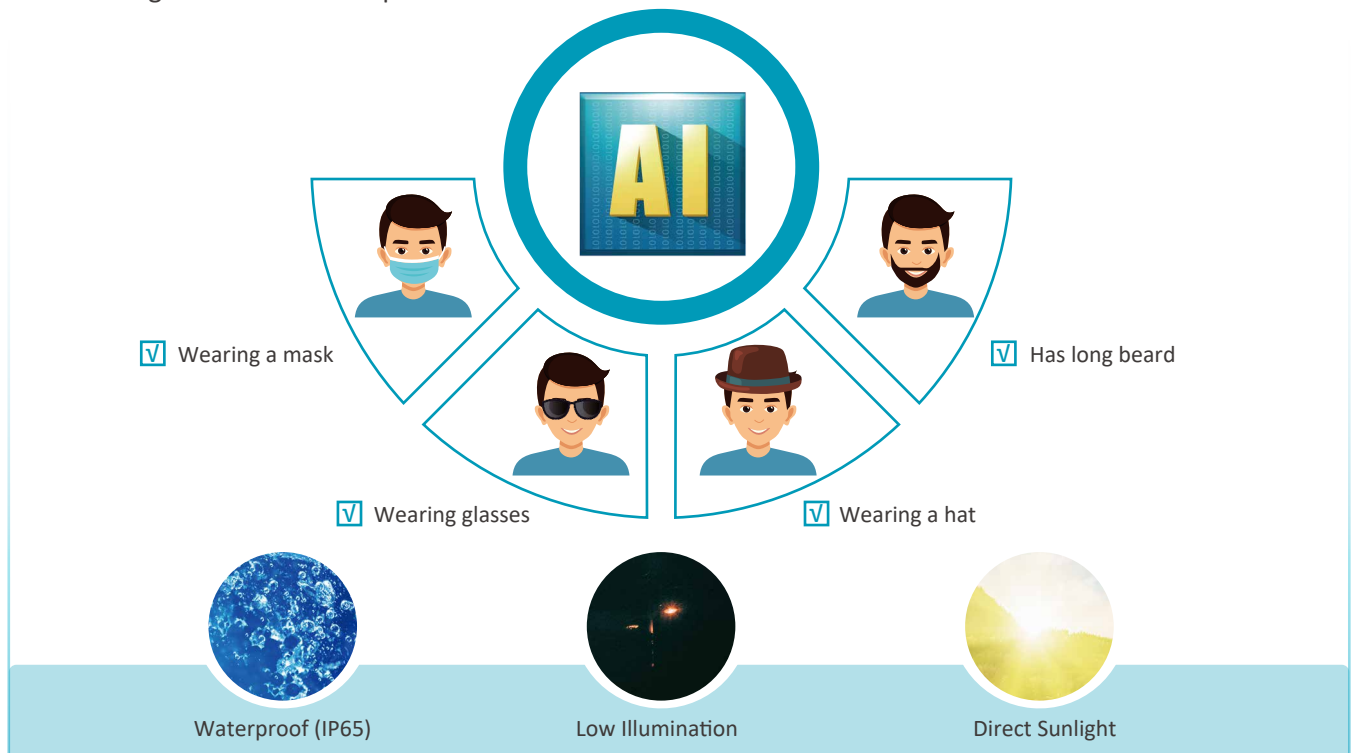
• Self-developed Face Recognition Algorithm

Provides high performance and low costs.



• AI Chip Empower

FACT can adapt well to changes in body characteristics, accessories, or even harsh environments. Even if a person is wearing a mask, has long beard, wearing a hat or has glasses on, the device can still accurately detect human targets. It can also adapt in different weather conditions and environments with low illumination.



• Anti-spoofing Algorithm Against Photo and Video

Access for individuals using photos and videos will be denied.





• Four-in-One Design

Buying this equipment is like purchasing 4 devices: 1 access control, 1 time attendance, 1 door station, and 1 IP camera.

01
Access Control
Supports Face Recognition to unlock the door.

02
Time Attendance
Supports Face Recognition for clocking in and out.

03
Intercom
Supports video call function to contact the reception, and allows unlocking of door/gate from the indoor monitor.

04
IP Camera
Supports real-time streaming and capturing of targets.

Solution Topology

System Topology & Product Applications

2 Access Control Modes: Standalone Mode and Central Management Mode

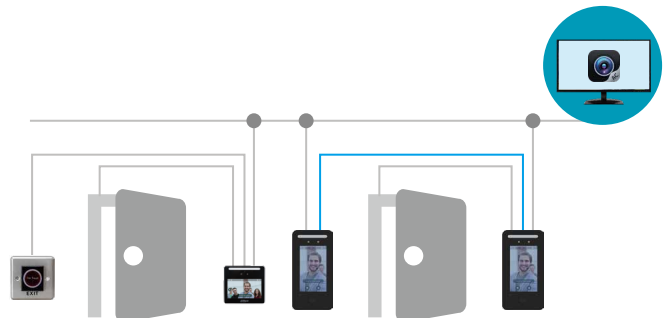
Mode 1: Standalone

Easy to install, easy to use, saves time, and reduces wiring, software, and installation costs.



Mode 2: Central Management

Supports management via SmartPSS-AC and DSS Pro, realizing access control and T&A centralized management.

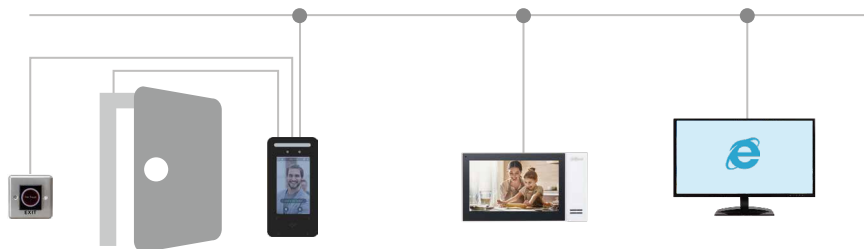


Integrated System Application

VDP Integrated and 3rd Party Access Control System Wire Connection

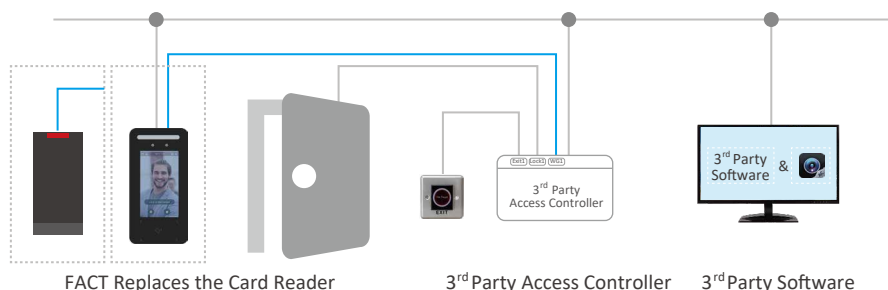
Video Intercom Integrated

Allows visitors to call the reception via an AC terminal. The reception can answer and unlock the door from an indoor monitor.



3rd Party Access Control System Cooperation

FACT ASI6 series supports to connect 3rd party access controller system via wiegand output.



FACT Replaces the Card Reader

3rd Party Access Controller

3rd Party Software

Recommended Products



ASI6214J-MFW

Basic info:

- 4.3" touch screen
- 6000 face capacity
- 6000 card capacity
- 6000 fingerprint capacity
- Wi-Fi
- IP65

Mounting:

- Wall mounting (default)
- Turnstile/vertical options

Software:

- DSS Pro/DSS Express /PSS AC/DMSS



ASI6213J-MW

Basic info:

- 4.3" touch screen
- 6000 face capacity
- 6000 card capacity
- Wi-Fi
- IP65

Mounting:

- Wall mounting (default)
- Turnstile/vertical for options

Software:

- DSS Pro/DSS Express /PSS AC/DMSS



ASI3213G-MW

Basic info:

- 4.3" touch screen
- 1500 face capacity
- 1500 card capacity
- Wi-Fi

Mounting:

- Wall and desktop mounting (default)

Software:

- DSS Pro/DSS Express /PSS AC/DMSS



ASA3213GL-MW

Basic info:

- 4.3" touch screen
- 500 face capacity
- 500 card capacity
- Wi-Fi

Mounting:

- Wall and desktop mounting (default)

Software:

- PSS AC

* Design and specifications are subject to change without notice.

Ver. 1, Dec. 2020

DAHUA TECHNOLOGY

No.1199 Bin'an Road, Binjiang District, Hangzhou, China. 310053

Tel: +86-571-87688883 Fax: +86-571-87688815

Email: overseas@dahuatech.com

www.dahuasecurity.com

