

# Insight Into Video Data

Dahua WizMind video metadata



Multiple Attributes




Easy Configuration



Quick Target Location

## What is Video Metadata?

Video metadata technology with deep learning algorithm can detect, track, and capture images of human, vehicle and non-motor vehicle. It selects the best images and extracts attributes of targets to locate them immediately.



**Gender:** Female  
**Age:** Young  
**Top:** Long Sleeves  
**Top Color:** Brown  
**Bottom:** Pants  
**Bottom Color:** Black

**Vehicle Type:**  
Two-wheeled Vehicle  
**Vehicle Color:** Black  
**Vehicle Passengers Number:** 1  
**Helmet:** Yes

**Plate Color:** White  
**Car Color:** Blue  
**Car Type:** Minivan  
**Sunshield:** No  
**Ornament:** Yes

## Features

### Multiple Attributes

Extract multiple attributes from human, vehicle and non-motor vehicle in video.



### Easy Configuration

One-key to enable the corresponding detection that includes human, vehicle and non-motor vehicle.



### Quick Target Location

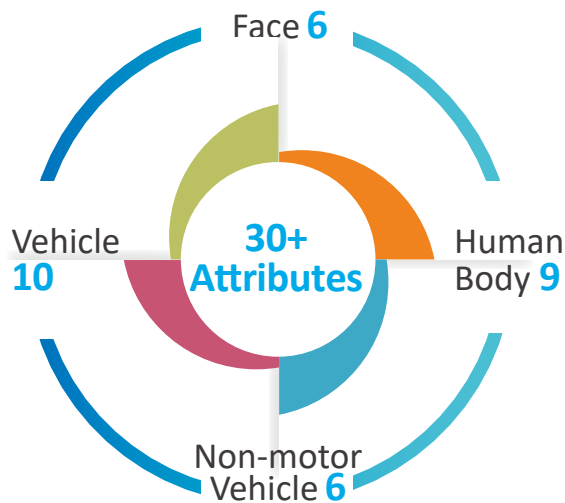
Efficiently search specified targets using attributes of targets.



## - Multiple Attributes

### Detect & Capture Specified Targets

Video metadata technology can quickly and accurately detect specific targets from a large number of objects in the video surveillance. It filters out unnecessary targets, and classifies the correct ones as human, vehicle, and non-motor vehicles. It takes a snapshot of the target and extracts their attributes.



<ul style="list-style-type: none"> <li>Gender</li> <li>Age</li> <li>Glasses</li> <li>Mouth Mask</li> <li>Expression</li> <li>Beard</li> </ul>	<ul style="list-style-type: none"> <li>Gender</li> <li>Age</li> <li>Top Color</li> <li>Top Type</li> <li>Bottom Color</li> <li>Bottom Type</li> <li>Hat</li> <li>Bag</li> <li>Umbrella</li> </ul>	<ul style="list-style-type: none"> <li>Vehicle Type</li> <li>Vehicle Color</li> <li>Cycling</li> <li>Number</li> <li>Top Color</li> <li>Top Type</li> </ul>	<ul style="list-style-type: none"> <li>Plate No.</li> <li>Plate Color</li> <li>Car Color</li> <li>Car Type</li> <li>Sunshield</li> <li>Ornament</li> <li>Calling</li> <li>Seatbelt</li> <li>Inspection</li> <li>Sticker</li> <li>Smoke</li> </ul>

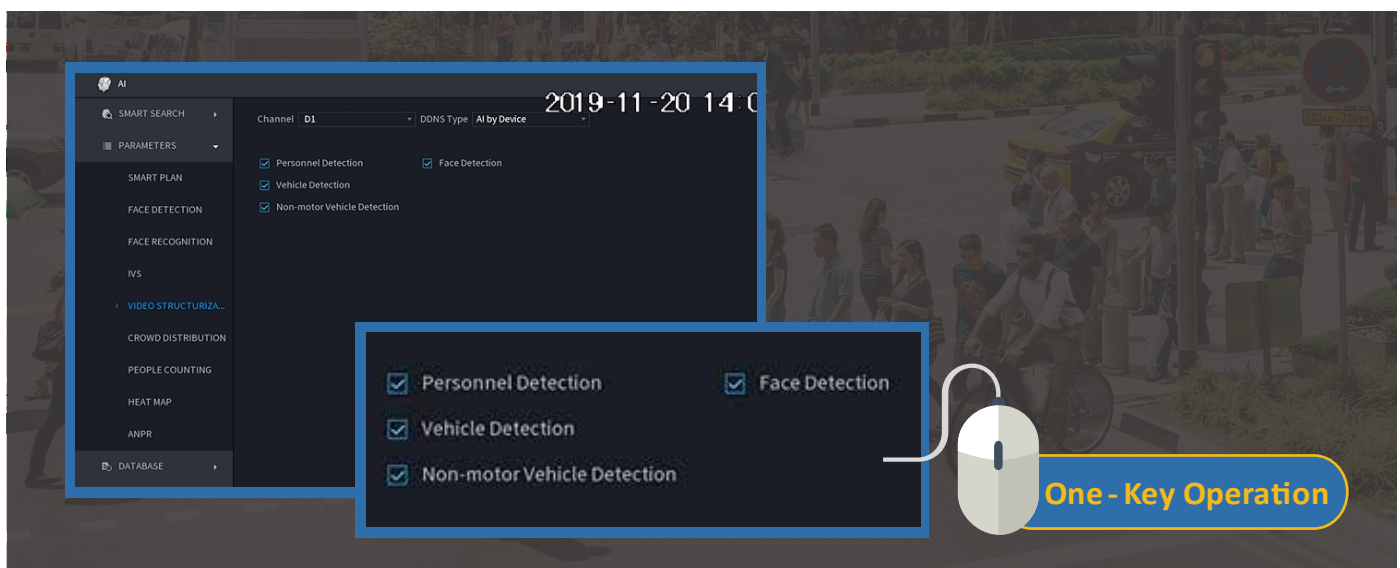
\*Attributes keep adding

Note: WizMind IVSS7000-I Series provides metadata extraction for normal video recording and allows AI searching in order to realize secondary analysis of recorded videos.

## - Easy Configuration

It's very easy to enable the video metadata function. The administrator only needs to check the target type that he wants to detect and capture in the surveillance video.

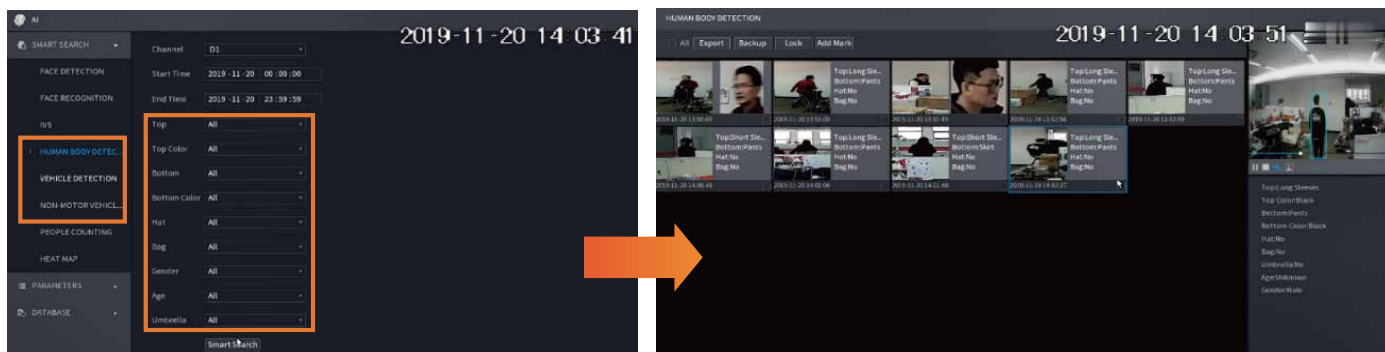
That will then enable the corresponding detection that includes human, vehicle and non-motor vehicle.



## - Quick Target Location

Metadata can be used to search targets on back-end device/platform.

Selecting the corresponding target attributes of the targets, administrator can quickly and accurately locate targets from massive data after an event.



## Products Series



### WizMind IPC

- 71242 Series
- 7842S Series
- 7442 Series



### WizMind PTZ

- SD10A & SD8A Series
- SDT5X Series
- PTZ83 & PTZ85 Series



### WizMind IVSS & NVR

- IVSS7000-I Series
- NVR5000-I Series



### WizMind XVR

- XVR8208A-4KL-I
- XVR8208A-4K-I
- XVR8x16-4KL-I



### WizMind

- DSS Pro

\* Design and specifications are subject to change without notice.

Ver.1, Jul. 2020

## DAHUA TECHNOLOGY

No.1199 Bin'an Road, Binjiang District, Hangzhou, China. 310053

Tel: +86-571-87688883 Fax: +86-571-87688815

Email: overseas@dahuatech.com

www.dahuasecurity.com

