

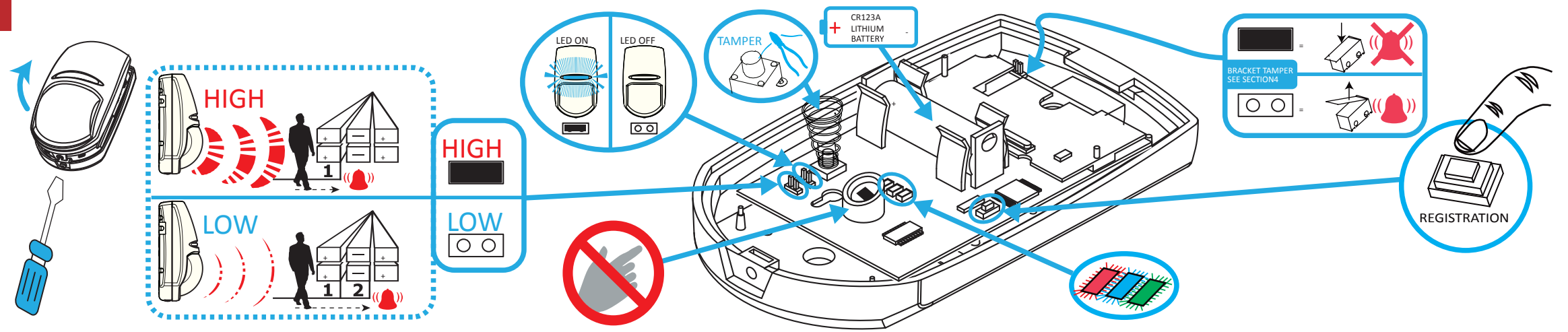
# DS-PD2-P10P-W

Wireless 10m Pet Immune PIR Detector

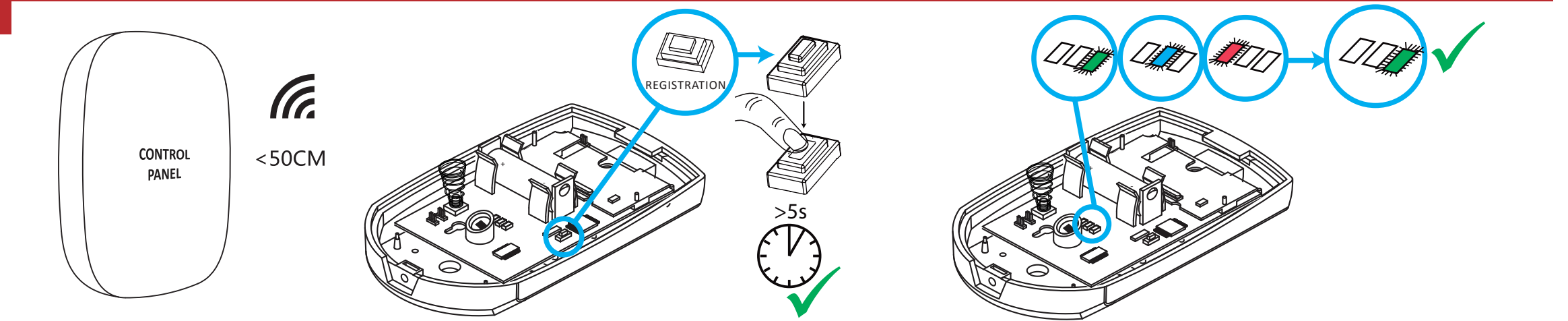
HIKVISION

UD09716B-A

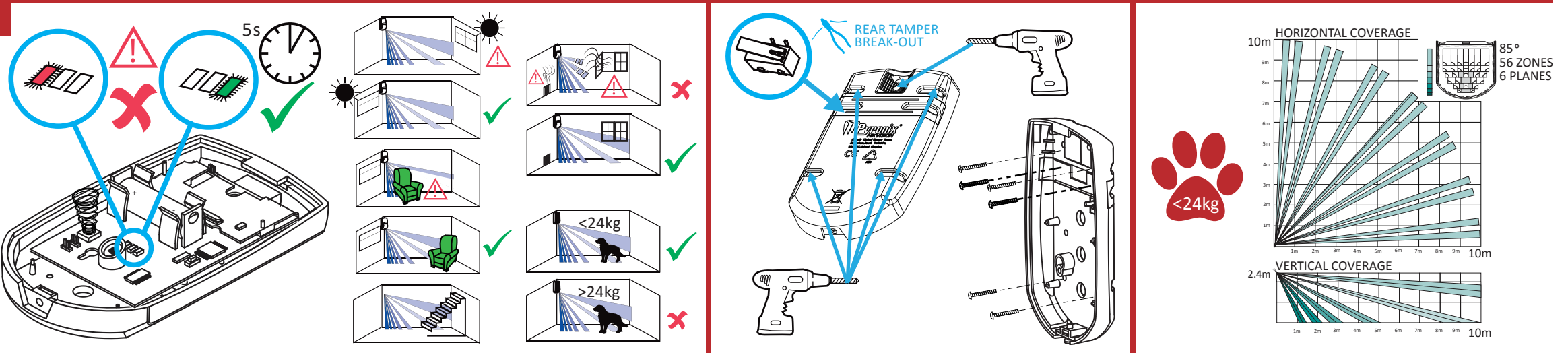
1



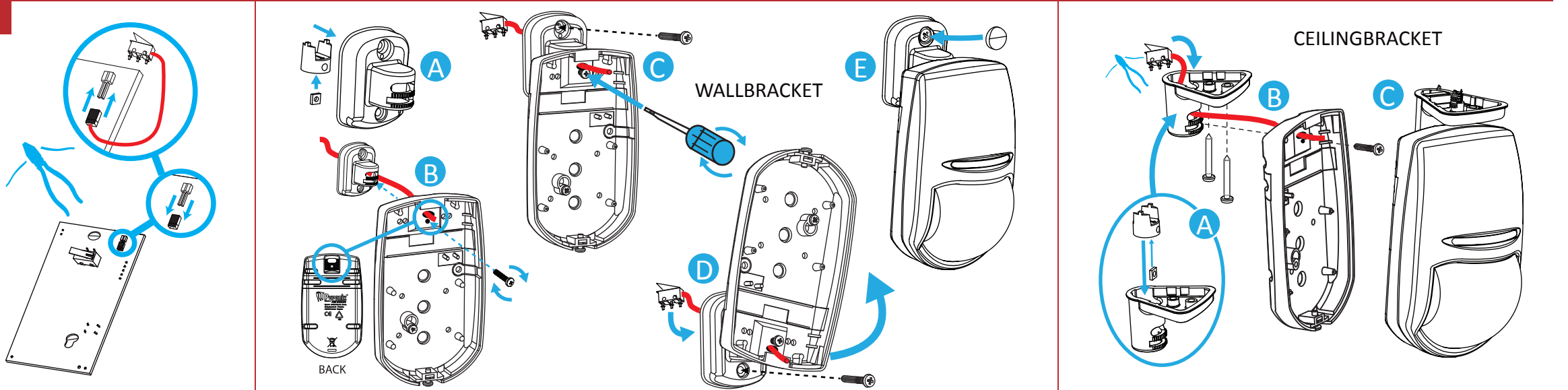
2



3



4



## ENGLISH

### Diagram References

#### 1 Wireless device control

#### 2 Registration

Please register the detector within 90 seconds after it being powered on.

##### Register Locally

1. Make the security control panel enter the registration mode.
  2. Register the detector: Hold the registration key until the three LEDs flash alternately. The green LED will flash 8 times if the registration is finished.
  3. Communication Test: Release the TAMPER spring to trigger the alarm.
- Note:** The distance between the security control panel and the detector should be less than 50 cm.

##### Initialize the Detector

1. Remove the battery to power the detector off.
2. 5s later, hold the registration key and reinstall the battery to power the detector on at the same time to make the three LEDs start flashing alternately. Release the registration key while the three LEDs flash once together.

##### Register Via APP

1. Log in to the APP Store and input "Hik-Connect" to search the mobile client. Download and install Hik-Connect to your phone.
2. After installing, tap to run the client.
3. Power on the security control panel.
4. Log in the Hik-Connect and tap the icon "+" at the upper-right corner of the Hik-Connect page to add the security control panel. You can scan the QR code on the device rear panel or on the package box, or input the device serial No. manually to add the device when the device is in the registration mode.
5. After adding the security control panel, tap the arming status icon on the right of the security control panel's name to enter the Partition page.
6. Tap the "+" icon on Partition page to add the peripherals.

#### 3 Diagnostics (Check Signal Strength Before Mounting)

#### 4 Wired Tamper and Brackets

### Specification

Lens Characteristics	
Detection Range	10m
Detection Angle	85°
Detection Zones	56 zones and 6 planes
Detection Speed	0.3-3.0 m/s
Mounting Height	1.8-2.4m
Key Features	
Animal Immunity	24kg
Blue Wave Technology	Yes
Digital Temperature Compensation	Yes
Tamper Protection	Front, rear, and bracket tamper signal input
Signal Strength Indicators (SSI)	Yes
Electrical & Battery	
Transmission Frequency	433MHz, FM transceiver
Range in Open Space	800m
3V Lithium Battery Included	1x CR123A
Minimum Battery Life (years)	2
Environment Features	
Operation Temperature	-10°C to +40°C (Certified)
Weight	125g
Dimensions (H x W x D)	117 x 69 x 50mm
Accessories	
Ceiling Mounted Bracket Included	Yes
Wall Mounted Bracket Included	Yes

### Battery Information



The batteries supplied have been chosen to provide long service life whilst, for safety reasons, having limited output current. The battery is protected on purchase by a piece of plastic that must be removed for operation. When disposing of the product, the battery must be removed and disposed of separately in accordance with the local regulations.



This product and - if applicable - the supplied accessories too are marked with "CE" and comply therefore with the applicable harmonized European standards listed under the RE Directive 2014/53/EU, the RoHS Directive 2011/65/EU.



For electrical products sold within the European Community. At the end of the electrical products life, it should not be disposed of with household waste. Please recycle where facilities exist. Check with your local Authority or retailer for recycling advice in your country.

