

PATCH PANEL STAKOHOME-PATCH02-06

The most recent generation of a multi-purpose and modular data patch panel.

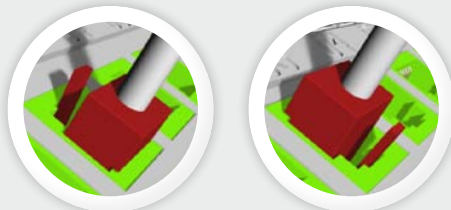
PACKAGE CONTAINS:

- 1 modular multi-purpose plastic patch panel for a DIN rail or flat surface, not fitted, for 6 keystone type ports
- 1 marker
- 1 set of pre-printed and blank marking labels
- 4 screws for attachment to a flat surface

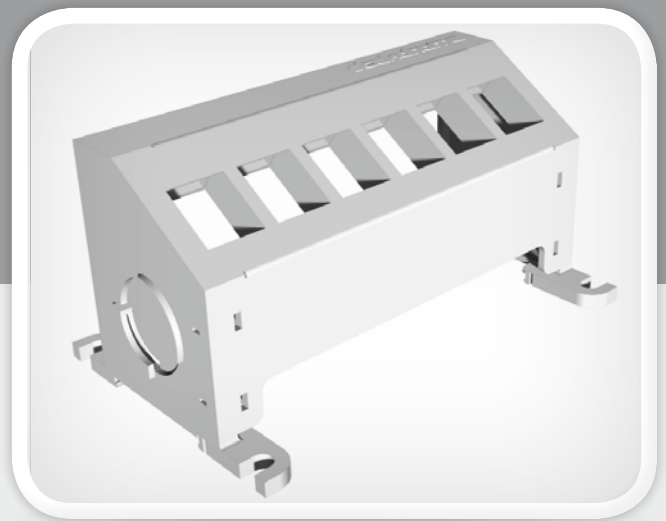
Note: This patch panel is legally protected by the Industrial Property Office.

Advantages

- It can be attached either to a DIN rail (TS-35) Distribution cabinet such as Siemens, Eaton, OEZ, ABB, Hager, Schneider Electric, Legrand or a flat surface.
- Once the STAKOHOME-PATCH02-06 panel has been attached, its upper section can be tipped back for easy access to the cabling and connectors (Fig. 1a and 1b).
- Six more positions can be added to the patch panel (i.e. individual patch panels can be extended by connecting other patch panels to them). Easy connection by means of a side „bayonet“ mount system (fig. 2).
- The distance strip can be turned over (then the connectors in the base part can be turned by 180°).



- Unused positions of the patch panel can be blanked off.
- The patch panel can be marked in two ways: directly on the panel (by means of a marker delivered with the panel) or onto a blank or pre-filled label (also delivered with the panel).
- Patch panel STAKOHOME-PATCH02-06 can be fitted with connectors RJ45 keystone (cat. 5, 6, and 6A), optical connectors (SC, LC, ST), audio connectors, connectors for distribution of STA and also with all modules, connectors and reductions which use the keystone type attachment device.



1A



1B



2



Wide range of uses in housing development. Due to its compatibility with different types of connectors, this patch panel is suitable for use in various projects (such as sound system distribution, TV-SAT distribution, CCTV, security systems, instrumentation and control systems etc.).

It is also suitable (due to its small dimensions and possibility to be fixed onto a flat surface) **for residential houses** where it is installed into a common distribution panel/cabinet together with other technologies (such as TV-SAT).



For further information (including a video) visit the site www.bytovy-rozvadec.cz/en