

500M Nano Powerline Ethernet Bridge

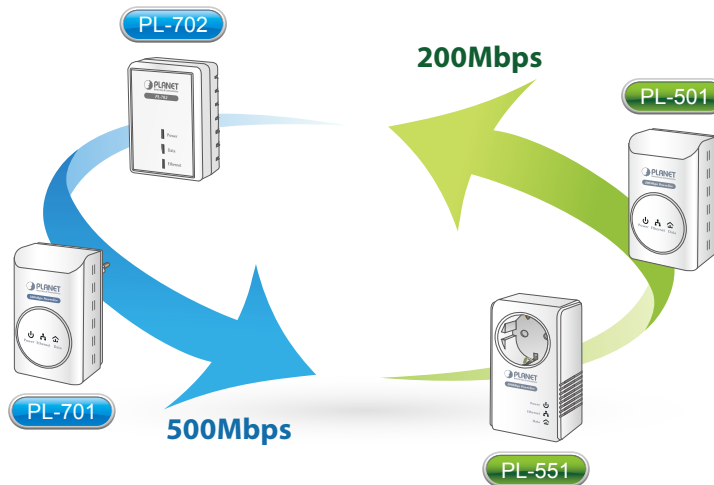


High Speed Ethernet Connection via HomePlug Powerline

With HomePlug AV technology, the PLANET PL-702 Nano Powerline Adapter extends a high speed up to **500Mbps In-house Connection** to any power outlet. With hassle-free plug and play installation, it enables users only need to plug a pair of powerline adapters into the house power outlets, and then can easily enjoy high definition video streaming and network transmission. No more tripping over tangled, messy wires running through your house, the PL-702 is an ideal solution to create a wall-to-wall home network.

Data Transfer Rate up to 500Mbps and Distance up to 300 Meters Wiring

With advanced HomePlug AV technology, the PL-702 provides users with stable, high speed data transfer rates up to 500Mbps on electric powerline length up to 300 meters. Therefore, the PL-702 can transmit multiple HD streams and even Full HD movies to every room, making it a great choice for easily building a multimedia entertainment network.



The PLANET 500M Powerline Series are compatible with the PLANET 200M Powerline Series.

Secures the network connection with the touch of a button, no need to remember passwords

Simply by pushing the button on the PL-702, users can easily set up a hassle-free secure Powerline network within minutes. It provides 128-bit AES encryption for network security and data protection.



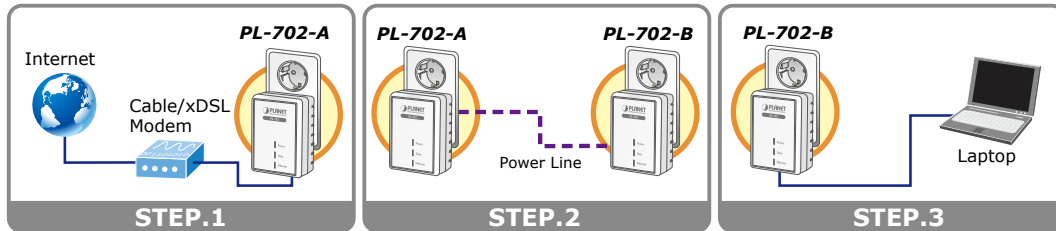
**128-bit AES Encryption for
Network Security and Data Protection**

Getting started is as easy at 1-2-3

1. Connects one Powerline Ethernet Bridge to your ADSL or Cable modem's Ethernet port and plug it into the nearest power socket.
2. Plug in the second Powerline Ethernet Bridge in your room or office.
3. Connects the PC / Laptop to the Powerline Ethernet Bridge via the network cable.

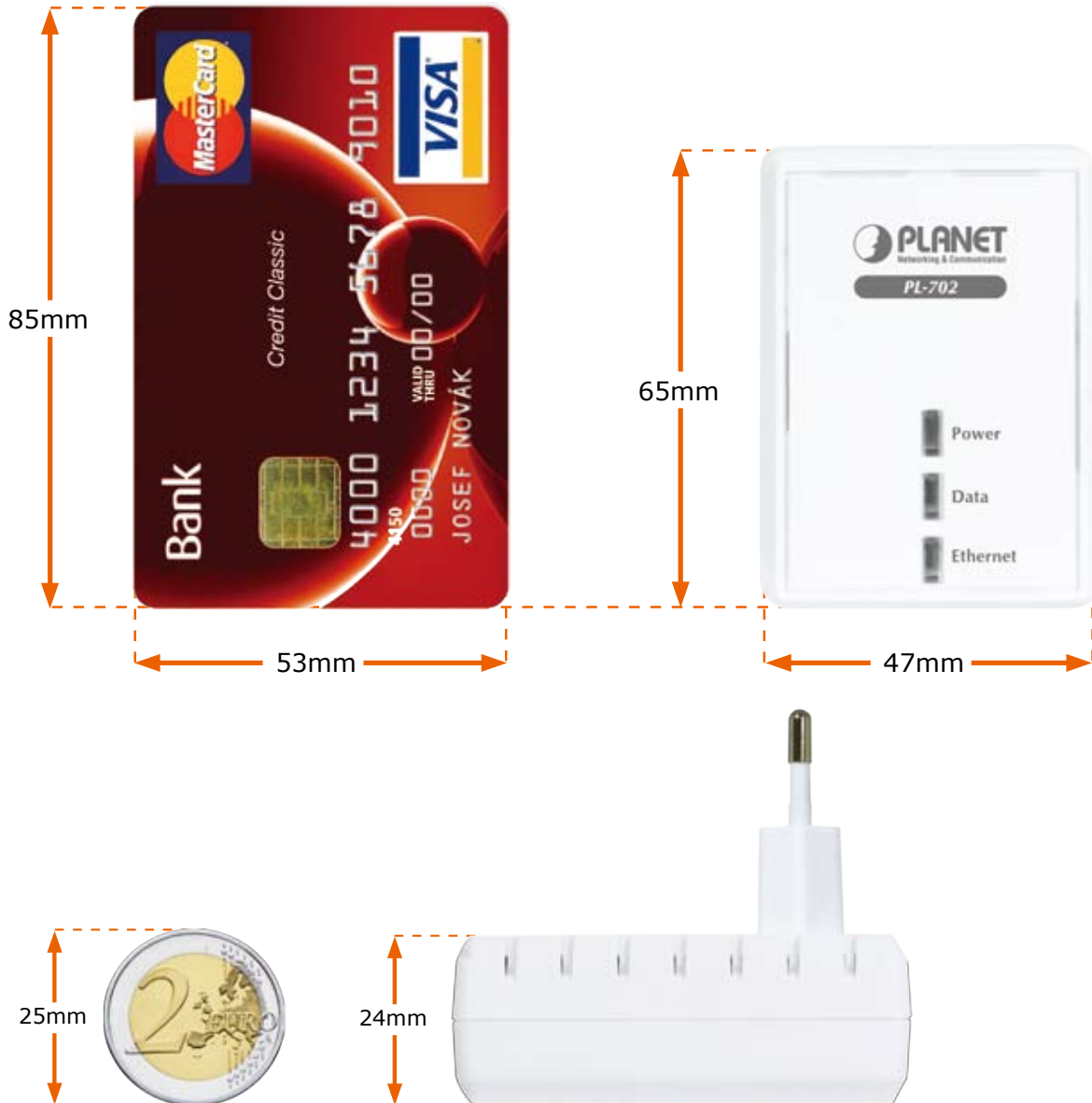
Users may immediately access to the Internet through the PC / Laptop immediately.

Quick & Easy Connection



Convenient nano-design blends in nicely with any surrounding

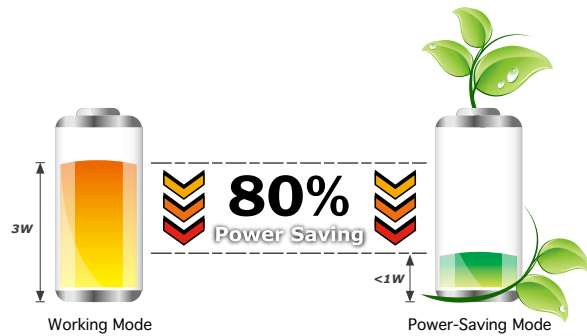
With a dimension of 65 x 47 x 24mm only, the PL-702 features a super compact and sleek design that blends in nicely with any surrounding at home or office.



Reduce Power Consumption Up to 80%

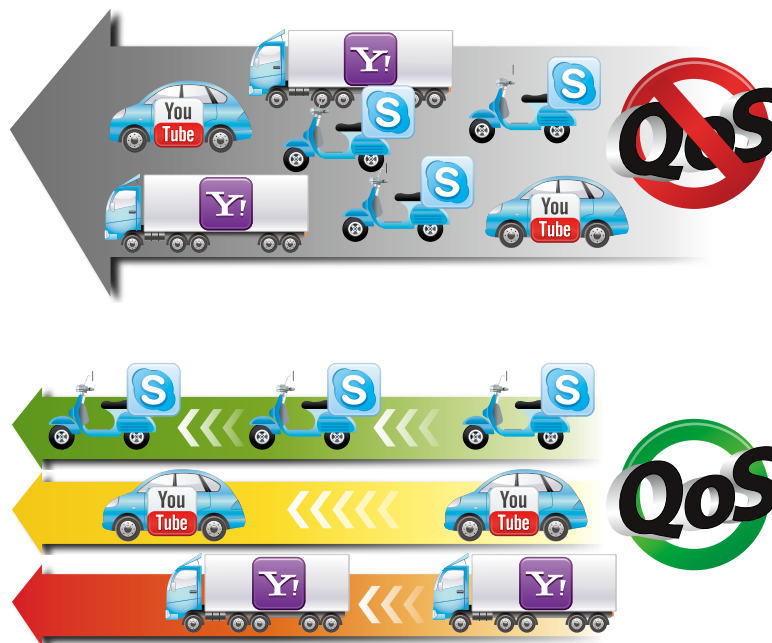
The PL-702 consumes less power when comparing to the existing Powerline Ethernet Adapters. Moreover, when there is no Ethernet link, the PL-702 will automatically switch to the "Power-saving" mode that would reduce energy wasting for over **80%*** when compared to the adapters without this feature.

*Actual data will vary depending on the network conditions and environmental factors.



Efficient Bandwidth Management by QoS (Quality of Service)

Quality of Service (QoS) is provided by the PL-702 enabling a network to provide better service to selected network traffic over various technologies.



Quality of Service(QoS)
Ensure the quality of bandwidth sensitive applications

KEY FEATURES

IEEE COMPLIANT HOMEPLUG AV & LAN

- Designed for high-definition multimedia streaming
- Data rate up to 500Mbps and distance up to 300 Meters over existing electrical wiring
- IEEE 802.3, IEEE 802.3u, IEEE 1901 and HomePlug AV standard compliant
- Backwards compatible with HomePlug AV (200Mbps) including PLANET Powerline products
- Equipped with 10/100Mbps RJ-45 Ports for LAN/ WAN, Auto MDI/ MDI-X supported

SECURE NETWORK CONNECTION

- Plug-and-Play installation in minutes, converts any power socket into a wired connection point

- Simple push-button setup with sophisticated data encryption, 128-bit AES encryption for network protection enhancement

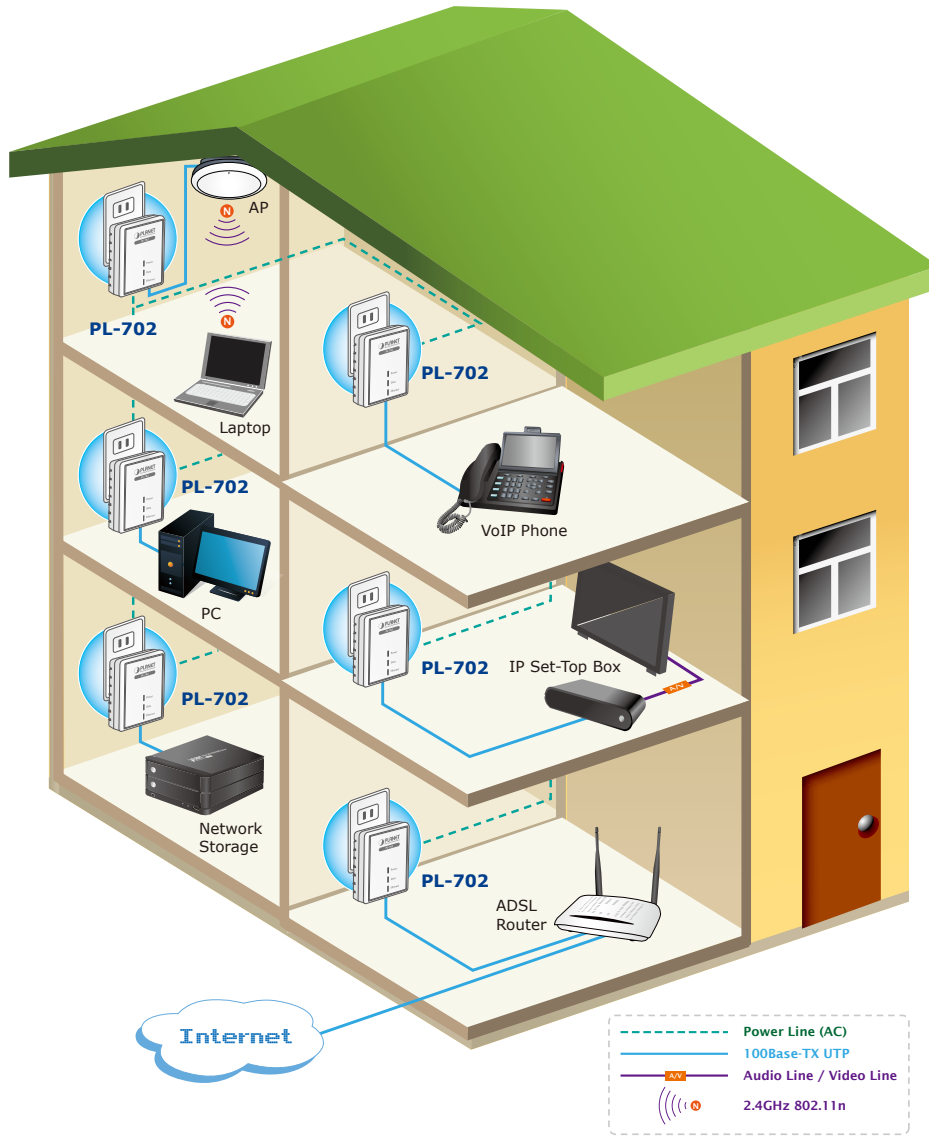
EASY INSTALLATION & MANAGEMENT

- Creates a high speed network connection throughout your home without the mess of cables
- Easy-to-use utility for powerline network management
- Up to 16 Powerline Network Adapters can communicate on a single network
- Green technology applied to help conserve energy when no data link is detected
- TDMA and priority-based CSMA/CA channel access schemes maximize efficiency and throughput

APPLICATIONS

High-Speed Ethernet Connection via Home's Powerline

PLANET provides several types of powerline products to meet various demands on Internet access sharing at home. As illustrated, users may connect an IP STB to the Nano Powerline Adapter PL-702, or connect a PC to the PL-702 in the house freely. With the PLANET powerline products applied, no messy network cables and additional switches are required at home and users can entirely enjoy home broadband network from now on.



SPECIFICATION

Product	500M Nano Powerline Ethernet Bridge
Model	PL-702
Hardware Specification	
Network Interface	One RJ-45 port (10/100Base-TX Ethernet) One 500Mbps power line port supporting co-existence with HomePlug 1.0 (14/85Mbps)
Cabling	Cat. 5 UTP cable
LED	Power: On / Off Ethernet: Red / Orange / Green / Off Data: Solid / Blinking / Off
Button	One Security / Reset button
Standards Conformance	
Computer Interface	IEEE 802.3 10Base-T IEEE 802.3u 100Base-TX
Standards	IEEE 1901 / HomePlug AV
Security	128-bit AES link encryption with key management
Data PHY Rate	500Mbps over Powerline and 10/100Mbps over Ethernet
Modulation Schemes	OFDM symbol modulation on line synchronization 1024/256/64/16/8 - QAM, QPSK, BPSK, ROBO carrier modulation
Frequency Band	2 ~ 50 MHz
Additional Protocols	Mix of TDMA and CSMA/CA channel access scheme; CO device generates a periodic beacon carrier for channel access scheme
Operation Range	Estimated range of 300 meters in wall powerlines
Software Utility	Device detect / diagnostic, Windows 98 SE, ME, 2000, NT, XP, Vista, and Window 7
Environment Specifications	
Operating	Temperature: 0~40 Degree C Relative Humidity: 10~90% (non-condensing)
Storage	Temperature: -20~70 Degree C Relative Humidity: 5~95% (non-condensing)
Power Supply	100~240V AC, 50~60Hz internal
Housing Dimension (W x D x H)	65.3 x 47.3 x 24.5 mm
Weight	57 g
Emission	FCC, CE

ORDERING INFORMATION

PL-702-EU	500M Nano Powerline Ethernet Bridge (EU type direct-attached)
PL-702-UK	500M Nano Powerline Ethernet Bridge (UK type direct-attached)
PL-702-US	500M Nano Powerline Ethernet Bridge (US type direct-attached)
PL-702-KIT-EU	500M Nano Powerline Ethernet Bridge KIT (Two Devices Pack, EU type)
PL-702-KIT-UK	500M Nano Powerline Ethernet Bridge KIT (Two Devices Pack, UK type)
PL-702-KIT-US	500M Nano Powerline Ethernet Bridge KIT (Two Devices Pack, US type)

RELATED PRODUCTS

PL-501-EU	200M Powerline Ethernet Bridge (EU type direct-attached)
PL-501-UK	200M Powerline Ethernet Bridge (UK type direct-attached)
PL-501-US	200M Powerline Ethernet Bridge (US type direct-attached)
PL-551-EU	200M Powerline Pass-Through Adapter (EU type direct-attached)
PL-701-EU	500M Powerline Ethernet Bridge (EU type direct-attached)
PL-701-UK	500M Powerline Ethernet Bridge (UK type direct-attached)
PL-701-US	500M Powerline Ethernet Bridge (US type direct-attached)
NAS-7103	1-Bay SATA NAS Server
NAS-7202	2-Bay SATA NAS Server
NVR-401	4-CH Network Video Recorder
NVR-420	4-CH Network Video Recorder with HDMI
WNAP-1110	802.11n Wireless Access Point
WNAP-C3220	300Mbps 802.11n Wireless Ceiling Mount Range Extender