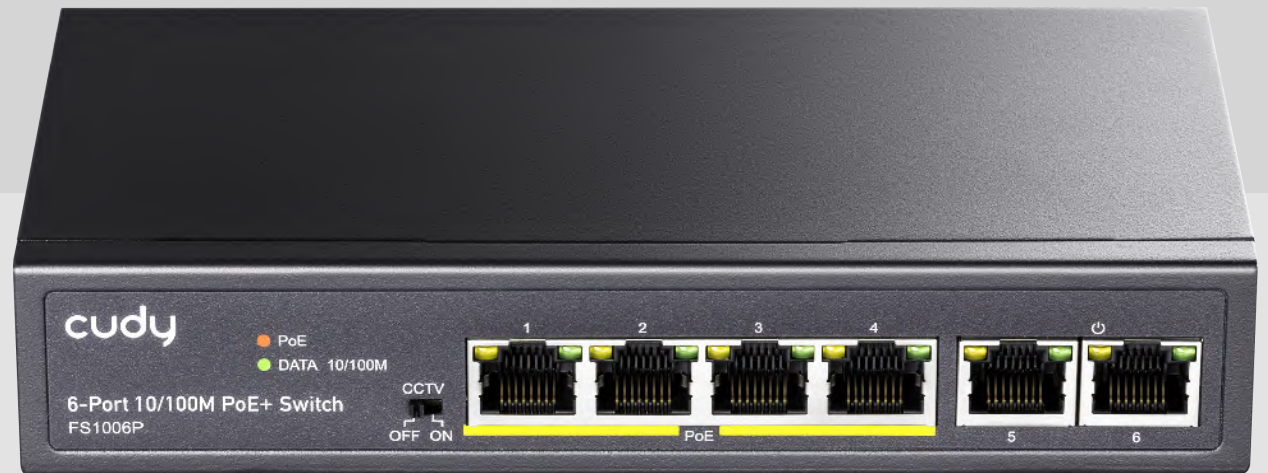




Model

FS1006P

4-Port 10/100M(PSE)+2-Port
10/100M Uplink PoE Switch



1.Product Overview

FS1006P is 6-port 10/100Mbps switch with 4 port PoE(Port1~4). The electrical power and data transmission on the same cable can expand your network to the places where no power lines or outlets, where you can install devices such as APs, IP cameras, or IP phones etc. With store & forward technology and dynamic memory allocation, FS1006P guarantee the bandwidth distribute each port effectively.

With Power supply, PoE module and switch PCBA Three in one, FS1006P is easy to install and become smaller and more flexible. In addition, FS1006P supports CCTV function which can improve the network environment and reduces network maintenance costs. It is easy to manage and maintain which can meet a lot of networking environment, such as Business building, Community, Hotel, Office etc.

2. Features

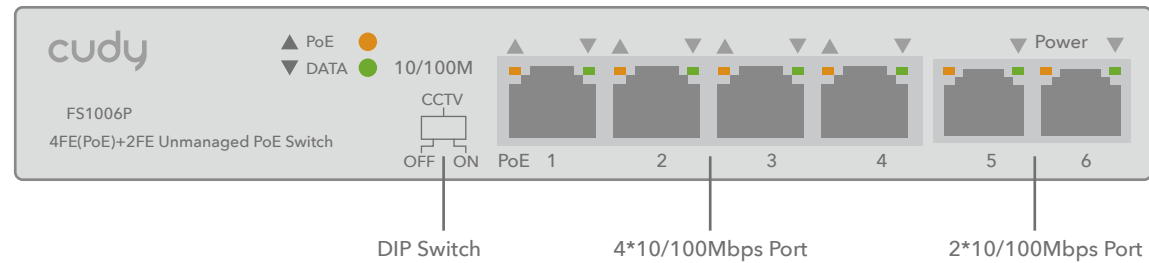
1. Complies with IEEE802.3af/at Standard;
2. Supports PoE Power up to 32W for each PoE port
3. Auto detect power device; will not burned non-standard PoE device or normal PoE switch.;
4. Supports port power supply prioritization, guarantee the continuous power supply of key nodes
5. One key CCTV mode, Remote power and Data feeding up to 250m;
6. Supports IEEE802.3 x full duplex flow control and Backpressure half duplex flow control;
7. Line-speed forwarding, intelligent identification
8. Supports storage - and- forward for Data exchange;
9. Internal power supply with small case.

3. Product Specifications

Model	FS1006P
PoE standard	IEEE802.3af/at
Interface	6*10/100Mbps RJ45 port
key function	CCTV
PoE port	1-4
PoE Total	60W
Power supply	65W
RJ45 PoE power supply	Mode A Anode1/2 Cathode3/6
PoE output-port	Max 32W
Indicator	PWR, LNK/ACT, PoE
Network media	10BASE-T: UTP category 3, 4, 5 cable(≤100m)
	100BASE-TX: UTP category 5, 5e cable(≤100m)
MAC Address Table	2K, Automatic study, automatic updates
jumbo frame	1528K Bytes
Packet buffer	768K bit
Transfer Mode	Store-and-forward
Packet forwarding rate	0.89Mpps
Bandwidth	1.2Gbps
Fan	Fanless
Device Dimension	168*93*32mm
Machine weight	<1kg
Input Voltage	AC 100-240V 50/60Hz
Output Voltage	DC:55V/1.5A
Operating Temperature	0°C ~ 40 °C
Storage Temperature	-40 °C ~ 70 °C
Operating Humidity	10% ~ 90% non-condensing
Storage Humidity	5% ~ 90% non-condensing
Surge Protection	±4KV
Certification	CE, FCC Class A
MTBF	>50000 hour
Electrostatic standard	Contact 4KV, air 6KV

4. The front panel following figure:

The FS1006P front panel lights to monitor working state and help fault analysis



5. The DIP Switch On the panel

CCTV mode, Power supply up to 250m

When DIP switch toggle to default, all ports can communicate with each other. When DIP switch toggle to CCTV mode, 1-4 port can be isolated each other, but 1-4 port can connect to 5/ 6 port after open VLAN to stop broadcast storm to increase forwarding rate of frame. UP to 250m PoE distance allows you to expand you network via Ethernet cable to where there is no power line or outlet but where you want to fix device such as IP Cameras.
(Note: Please turn off the device before setting)

6. Ordering information

Model	FS1006P
Product Information	4*10/100Mbps+2FE Uplink PoE Switch